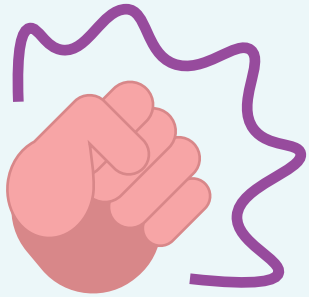


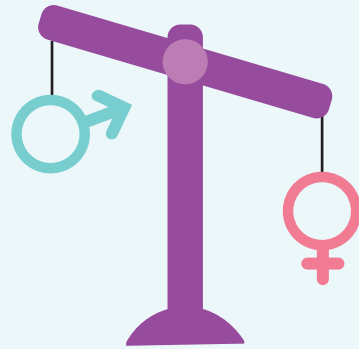
Particular expressions of gender inequality consistently predict higher rates of violence against women

Gendered Drivers of Violence Against Women:



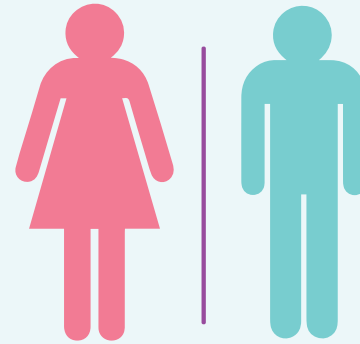
1

Condoning violence against women



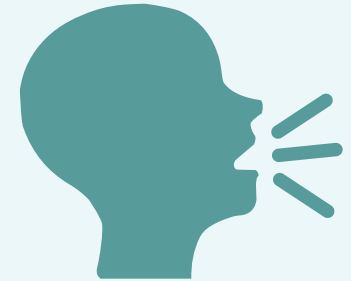
2

Men's control of decision-making and limits to women's independence.



3

Rigid gender roles and constructions of masculinity and femininity



4

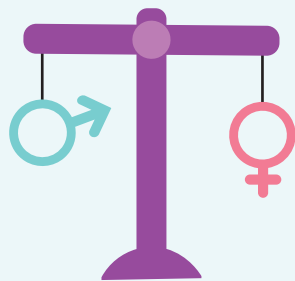
Disrespect towards women and male relations that emphasise aggression

Actions to Address the Gendered Drivers of Violence Against Women:



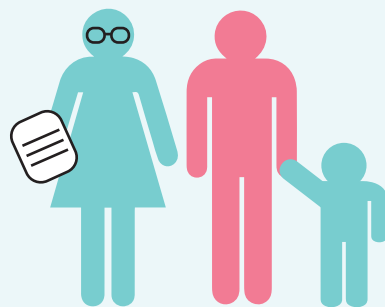
1

Challenge condoning of violence against women



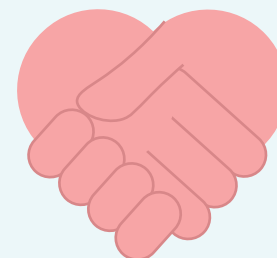
2

Promote women's independence and decision-making



3

Foster positive personal identities and challenge gender roles



4

Strengthen positive, equal and respectful relations between the genders



5

Promote and normalise gender equality